

VOREDA HOUSE CASE STUDY.



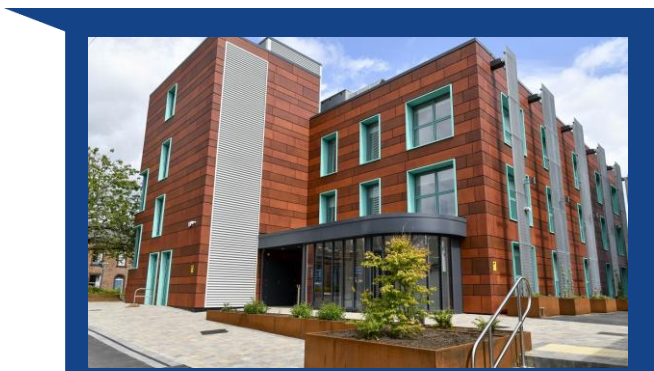
Project Name	Voreda House
Client	Collinson Construction
Sector	Commercial
Services required	Painting and Decorating
Length of project	12 weeks

PROJECT SUMMARY.

We were appointed by Collinson Construction to deliver the painting and decorating package for Cumbria Council at Voreda House in Penrith. The former NHS office building was to become Westmorland and Furness Council's new offices, housing public-facing services with a focus on energy-savings and sustainability throughout the £8.3m refurbishment.

Our scope of works included full internal decorating to three floors of office space and two staircases, with an 8-week delivery programme set over a 12-week period. In the absence of a formal programme being issued to us, our professional management team worked with the client to forecast resources and the sequencing of work thereby preventing any delays and allowing us to meet the tight delivery deadline, despite additional works being required.

We used a range of performance products across the project to achieve a high-quality finish, including Johnstone's Covaplus premium matt emulsion on the walls in brilliant white and a further five colour-matched tinted emulsions to feature walls. We used Johnstone's Acrylic Durable Eggshell on the woodwork which included skirting boards, door frames and arches, stringers and boxing. We used a Johnstone's metal paint for the staircase handrails and balustrades, and a Johnstone's water based 2pack epoxy floor paint in the plant areas. We were also able to use Johnstone's recycling scheme to recycle the empty paint cans on this project, helping to reduce the carbon footprint on the project.



[CLICK HERE](#) for further detail on this project

HEAD OFFICE: Scafell Building,
Carlisle Airport Business Park,
Carlisle, CA6 4NW
Tel: 01228 404114

STORY
DECORATING GROUP