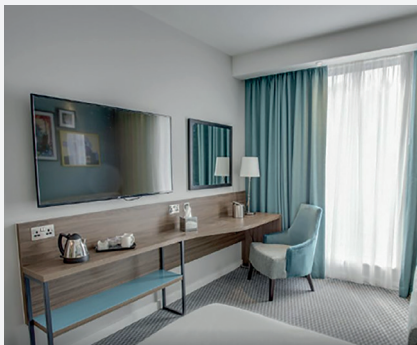


HOTEL & LEISURE CASE STUDY HAMPTON BY HILTON EDINBURGH AIRPORT.



Project Summary

This 6-storey new build project was planned as a 175-bedroom hotel but, a planning application submitted during construction meant it finished as a 240-bedroom hotel with a gym, meeting rooms, bar & restaurant.

We decorated all 240 bedrooms including feature walls and the corridors were finished ½ paint and ½ wallpaper. Epoxy flooring works were also carried out to the staircases.

The ground floor gym and meeting rooms were completed to a very high standard using 2 wallpapers and the breakfast room, entertainment zones, back of house & vestibule brought this project to completion.

We were challenged to complete 48 bedrooms in 2 weeks to allow the main contractor to complete the project ahead of schedule and the project opened 11 weeks earlier than programmed resulting in a very happy client and a project Story can be proud of.

Awarded

Commended in the New Build Category at the Painting and Decorating Association Premier Trophy Awards 2019

Key Facts

Project Name	Hampton by Hilton Edinburgh Airport
Client	McAleer & Rushe
Service	Decoration of New Build Hotel at Edinburgh Airport
Length of Contract	8 months

Carlisle Office

Head Office, Brunthill Road, Kingstown Industrial Estate, Carlisle CA3 0EH T: 01228 404 114

Manchester Office

Unit 6, Westlink Business Park, Guide Street, Salford M50 1EW T: 0161 925 0412