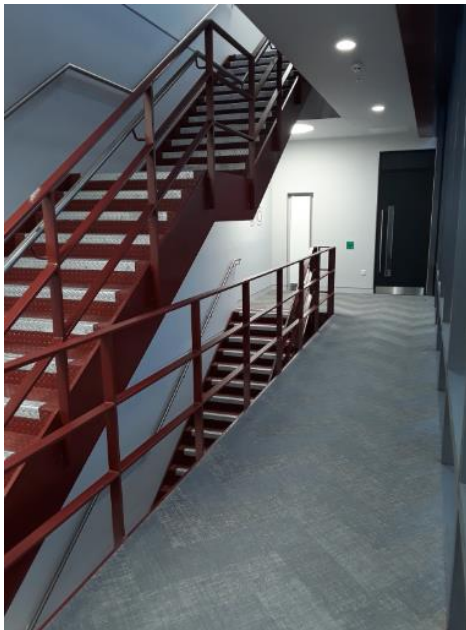


COMMERCIAL CASE STUDY 2 NEW BAILEY.



Project Summary

This contract consisted of the internal painting of all Levels, including the car park / basement areas of a new office block in central Manchester.

Ground Floor Reception areas and Levels 1 to 10 were all typical floors and similar with lift lobby areas, toilets, and floor plate. We carried out the painting to ceilings, walls and woodwork in all areas using Johnstone's trade products. There was also a basement which required us to seal the car park floor.

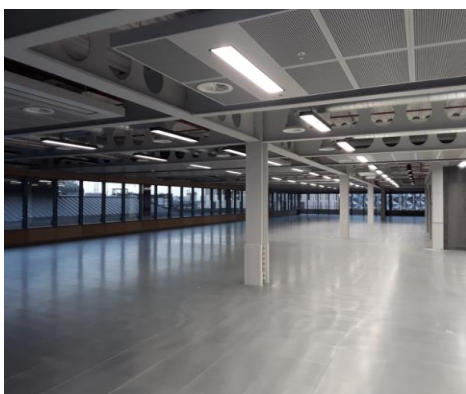
In addition to this were 2 metal staircases, North and South. These staircases required painting to the balustrades, treads and risers and were finished in Sherwin Williams specified products.

The South stairs stood out as a feature with a black and yellow finish on the panels, which took some neat handywork by our painters.

Works were carried out with a steady team of 5 or 6 painters but accelerated dramatically towards the end meaning labour was increased up to 22 at one point.

We completed the works for the client inspection on time and made a few remedial visits at the clients request with a small team as and when required.

Project delays due to Covid 19 did not cause too many problems and the new safety measures, risk assessments and operating procedures ensured that everyone was kept safe on site by following strict government guidance to the letter.



Key Facts

Project Name	2 New Bailey
Client	Bowmer & Kirkand
Service	Painting & Decorating
Length of Contract	8 months