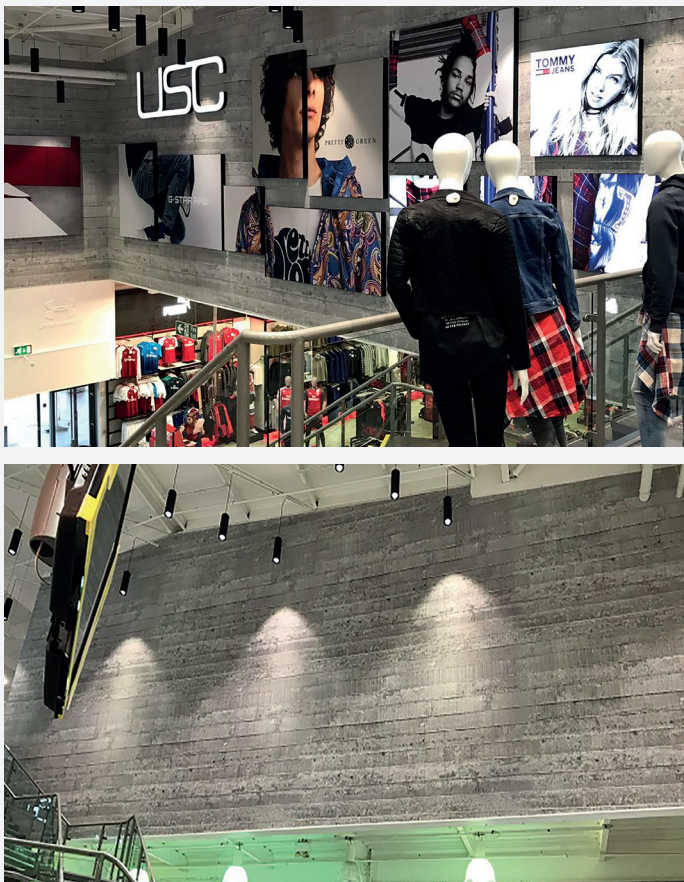


COMMERCIAL CASE STUDY SPORTS DIRECT SHIREBROOK.



Project Summary

Existing nearly new building requiring fitout of Flagship Sports Direct, USC and Flannels Stores.

This was a challenging job involving us working in a live environment and included completing technical tasks at high level.

We completed spray painting to high level areas using mechanical access equipment including painting cable trays whilst the stores had to remain open and safe to its customers. To allow this we protected public areas and clothing as the client had to keep trading whilst work on the fit out continued. We also painted plaster ceilings and walls using airless spray, brush and roller in various colours to match the clients design standard. Finally, we applied bespoke wallpaper, including digital prints, to various areas including a high-level staircase which was obviously challenging due to access requirements.

Minimum waste created on this project and all clean packaging was disposed of into specified contractor skips.

Key Facts

| | |
|---------------------------|---|
| Project Name | Sports Direct Shirebrook |
| Client | ISG |
| Service | Decoration of fit out to Sports Direct, USC and Flannels Flagship Store |
| Length of Contract | 3 months |

Carlisle Office

Head Office, Brunthill Road, Kingstown Industrial Estate, Carlisle CA3 0EH T: 01228 404 114

Manchester Office

Unit 6, Westlink Business Park, Guide Street, Salford M50 1EW T: 0161 925 0412